



Alemayehu Gorfe, PhD

Professor

University of Texas Health Science Center in Houston

McGovern Medical School

Department of Integrative Biology & Pharmacology

Alemayehu.g.abebe@uth.tmc.edu

Research Interests

Protein-membrane interactions and conformational dynamics of peripheral membrane proteins; structure-based drug design with emphasis on cancer therapeutics.

Strengths or Unique Resources

A major strength of our laboratory is the ability to combine detailed molecular simulations with biophysical and cell-based assays. We have access to state-of-the-art supercomputers for molecular simulations and modern facilities for experimental work, including resources to isolate and characterize cell-derived native lipid nanodiscs.

Type of collaborator you seek

Happy to discuss collaborations on a range topics including drug development, structural characterization of fuzzy complexes on membrane surfaces and single-molecule biophysics, among others.

Publication List (link & qr code)

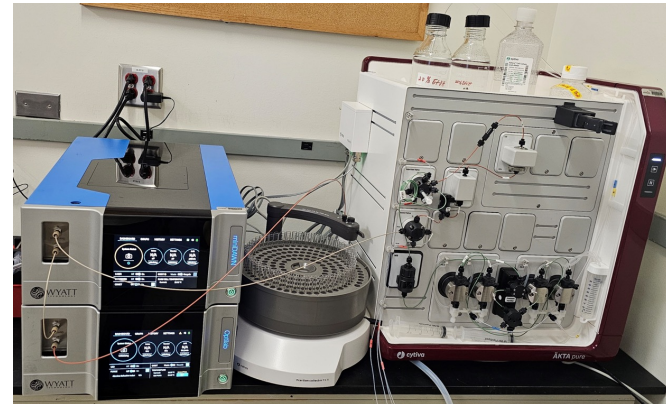
https://www.uth.tmc.edu/agorfe_lab/publications.html

Lab or Faculty website (link & qr code)

https://www.uth.tmc.edu/agorfe_lab/

LinkedIn (link & qr code)

<https://www.linkedin.com/in/alemayehu-gorfe-9924bb13/>



Focus on in-built vulnerabilities: Advancing drug discovery through a detailed understanding of target dynamics, membrane engagement, and interactions with partners

