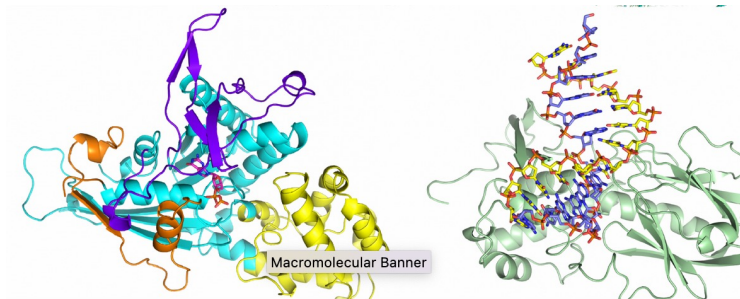
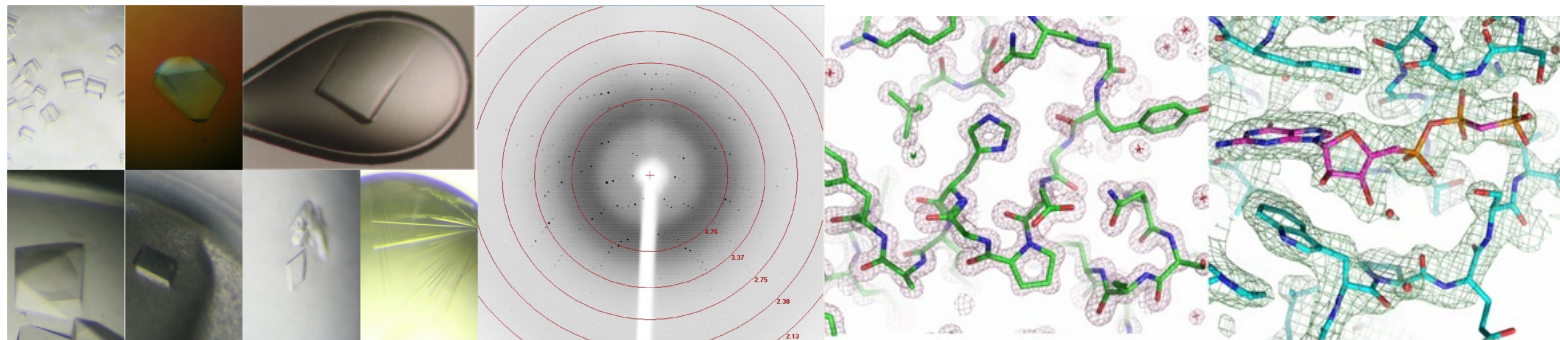




Sukyeong Lee, PhD
Associate Professor
Baylor College of Medicine
slee@bcm.edu

Core director of
**Macromolecular x-ray
crystallography
Advanced Technology
Core** at BCM



Research Interests Crystal structure determination of macromolecules,
Micro electron diffraction,
Structure prediction using AlphaFold,
Virtual drug screening

Strengths or Unique Resources Provide complete package for crystal structure determination of macromolecules
All services are customized for each project

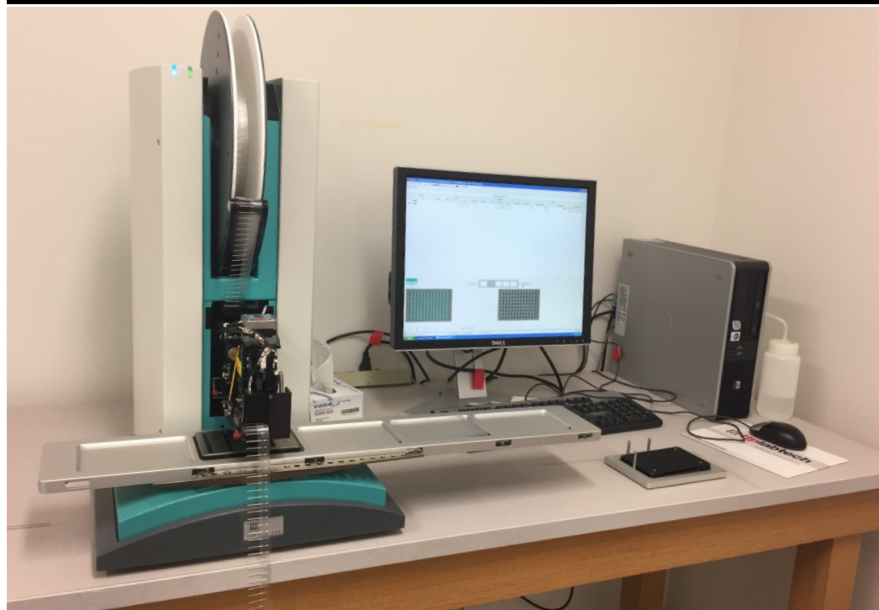
Type of collaborator you seek Assisted core users are my collaborators.
Independent users use core equipment.

Publication List <https://www.ncbi.nlm.nih.gov/myncbi/1Vyns-JM82UQg/bibliography/public/>

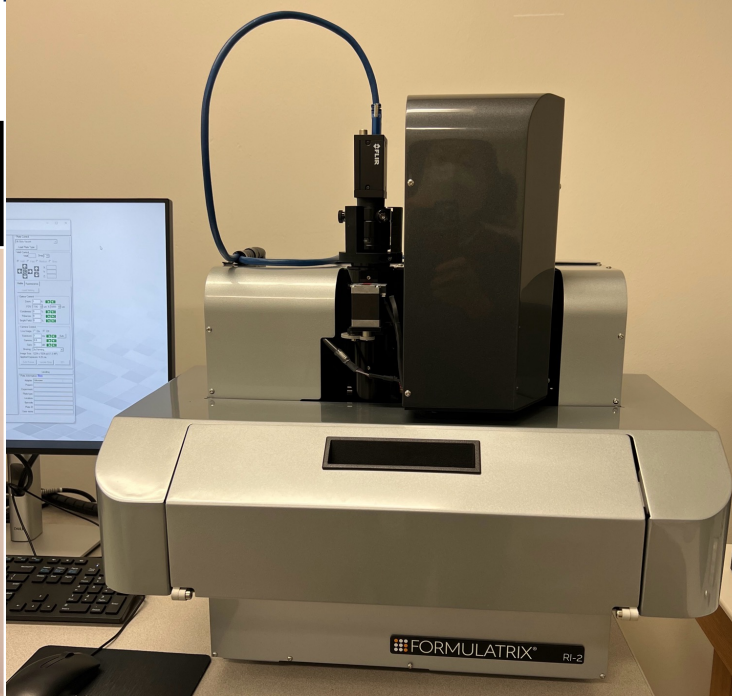
Lab or Faculty website <https://www.bcm.edu/research/atc-core-labs/macromolecular-x-ray-crystallography-core>

Crystallization Lab

Mosquito Crystallization Robot



Rock Imager 2



Crystallization plate storage cabinet



Core services

- X-ray crystal structure determination

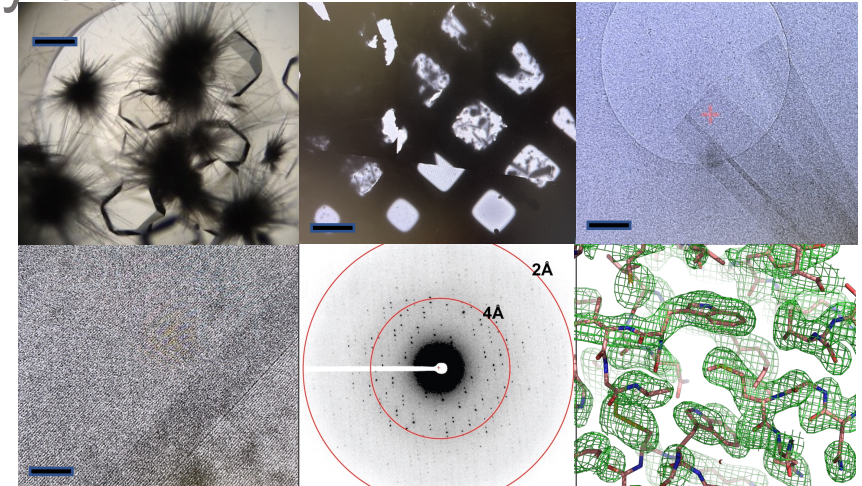
Crystallization setup – Assisted/Unassisted

Imaging Crystallization plates – Assisted/Unassisted

Synchrotron preparation/access to the beam line – by staff :

Data Processing – by staff

Structure Determination – by staff



- Structure determination using microED (new service)

- Structure prediction by AlphaFold (new service)

- Virtual drug screening including customized targeted library generation (new service)

